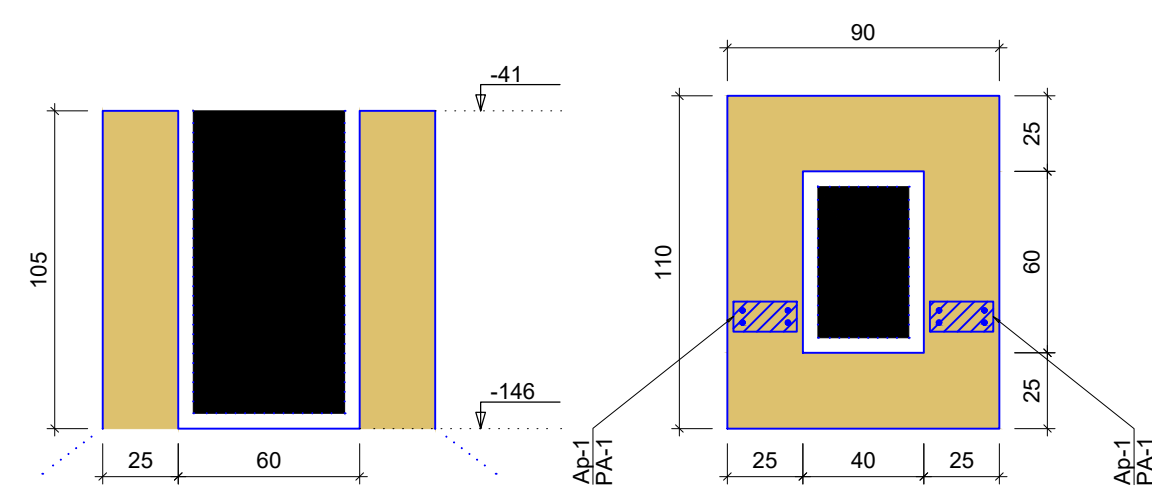
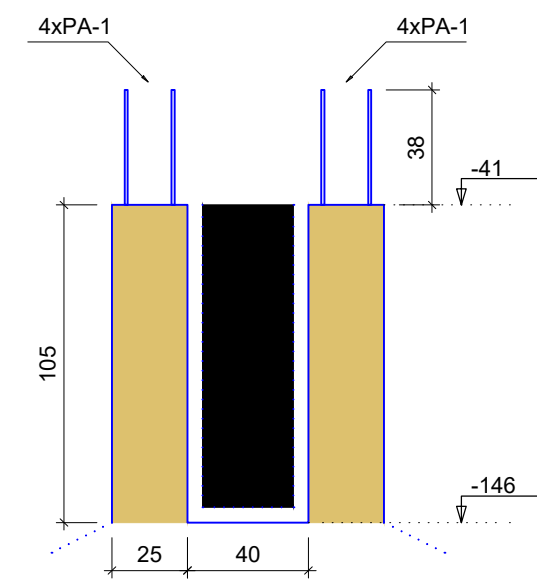
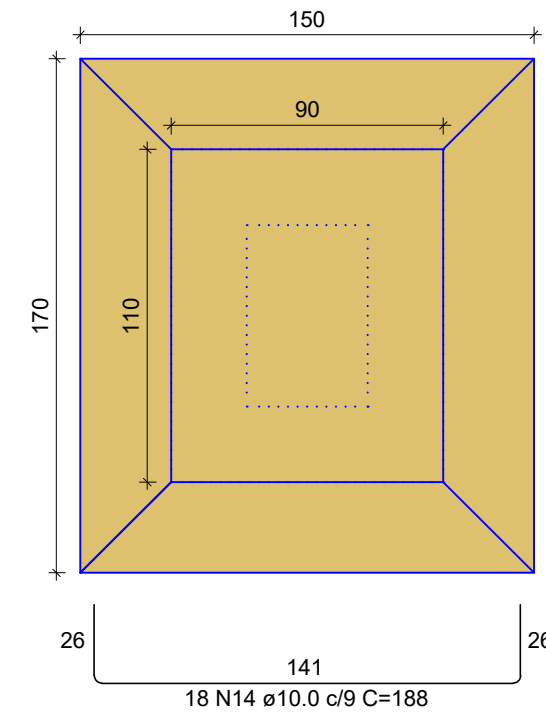


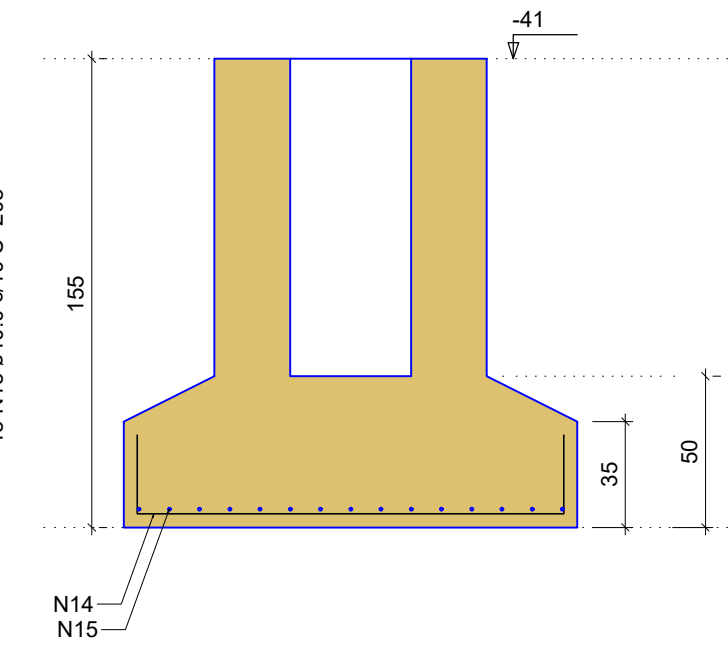
**Cálice P5**  
ESC 1:25



**S5**  
PLANTA  
ESC 1:25



**CORTE**  
ESC 1:25



Solo com capacidade de suporte > 2.00 kg/cm²  
Solo compactado sobre a sapata  
peso específico > 1600.00 kg/m³  
A sondagem fica por conta da empresa executora, caso avale necessário, o correto procedimento, se o solo for frágil, deverá reforçar as fundações/reservatório.

RELATÓRIO DO AÇO

Item	QTD	ESPECIFICAÇÃO	UNID	VALOR UNITÁRIO	VALOR TOTAL
1	1	18 N14 ø10.0 c/9 C=188	kg	180.00	180.00
2	1	15 N15 ø10.0 c/10 C=208	kg	150.00	150.00
3	1	12 N14 ø10.0 c/9 C=188	kg	180.00	180.00
4	1	12 N13 ø10.0 c/9 C=188	kg	180.00	180.00
5	1	12 N12 ø10.0 c/9 C=188	kg	180.00	180.00
6	1	12 N11 ø10.0 c/9 C=188	kg	180.00	180.00
7	1	12 N10 ø10.0 c/9 C=188	kg	180.00	180.00
8	1	12 N9 ø10.0 c/9 C=188	kg	180.00	180.00
9	1	12 N8 ø10.0 c/9 C=188	kg	180.00	180.00
10	1	12 N7 ø10.0 c/9 C=188	kg	180.00	180.00
11	1	12 N6 ø10.0 c/9 C=188	kg	180.00	180.00
12	1	12 N5 ø10.0 c/9 C=188	kg	180.00	180.00
13	1	12 N4 ø10.0 c/9 C=188	kg	180.00	180.00
14	1	12 N3 ø10.0 c/9 C=188	kg	180.00	180.00
15	1	12 N2 ø10.0 c/9 C=188	kg	180.00	180.00
16	1	12 N1 ø10.0 c/9 C=188	kg	180.00	180.00
17	1	12 N0 ø10.0 c/9 C=188	kg	180.00	180.00
18	1	12 N18 ø10.0 c/9 C=188	kg	180.00	180.00
19	1	12 N17 ø10.0 c/9 C=188	kg	180.00	180.00
20	1	12 N16 ø10.0 c/9 C=188	kg	180.00	180.00
21	1	12 N15 ø10.0 c/9 C=188	kg	180.00	180.00
22	1	12 N14 ø10.0 c/9 C=188	kg	180.00	180.00
23	1	12 N13 ø10.0 c/9 C=188	kg	180.00	180.00
24	1	12 N12 ø10.0 c/9 C=188	kg	180.00	180.00
25	1	12 N11 ø10.0 c/9 C=188	kg	180.00	180.00
26	1	12 N10 ø10.0 c/9 C=188	kg	180.00	180.00
27	1	12 N9 ø10.0 c/9 C=188	kg	180.00	180.00
28	1	12 N8 ø10.0 c/9 C=188	kg	180.00	180.00
29	1	12 N7 ø10.0 c/9 C=188	kg	180.00	180.00
30	1	12 N6 ø10.0 c/9 C=188	kg	180.00	180.00
31	1	12 N5 ø10.0 c/9 C=188	kg	180.00	180.00
32	1	12 N4 ø10.0 c/9 C=188	kg	180.00	180.00
33	1	12 N3 ø10.0 c/9 C=188	kg	180.00	180.00
34	1	12 N2 ø10.0 c/9 C=188	kg	180.00	180.00
35	1	12 N1 ø10.0 c/9 C=188	kg	180.00	180.00
36	1	12 N0 ø10.0 c/9 C=188	kg	180.00	180.00
37	1	12 N18 ø10.0 c/9 C=188	kg	180.00	180.00
38	1	12 N17 ø10.0 c/9 C=188	kg	180.00	180.00
39	1	12 N16 ø10.0 c/9 C=188	kg	180.00	180.00
40	1	12 N15 ø10.0 c/9 C=188	kg	180.00	180.00
41	1	12 N14 ø10.0 c/9 C=188	kg	180.00	180.00
42	1	12 N13 ø10.0 c/9 C=188	kg	180.00	180.00
43	1	12 N12 ø10.0 c/9 C=188	kg	180.00	180.00
44	1	12 N11 ø10.0 c/9 C=188	kg	180.00	180.00
45	1	12 N10 ø10.0 c/9 C=188	kg	180.00	180.00
46	1	12 N9 ø10.0 c/9 C=188	kg	180.00	180.00
47	1	12 N8 ø10.0 c/9 C=188	kg	180.00	180.00
48	1	12 N7 ø10.0 c/9 C=188	kg	180.00	180.00
49	1	12 N6 ø10.0 c/9 C=188	kg	180.00	180.00
50	1	12 N5 ø10.0 c/9 C=188	kg	180.00	180.00
51	1	12 N4 ø10.0 c/9 C=188	kg	180.00	180.00
52	1	12 N3 ø10.0 c/9 C=188	kg	180.00	180.00
53	1	12 N2 ø10.0 c/9 C=188	kg	180.00	180.00
54	1	12 N1 ø10.0 c/9 C=188	kg	180.00	180.00
55	1	12 N0 ø10.0 c/9 C=188	kg	180.00	180.00
56	1	12 N18 ø10.0 c/9 C=188	kg	180.00	180.00
57	1	12 N17 ø10.0 c/9 C=188	kg	180.00	180.00
58	1	12 N16 ø10.0 c/9 C=188	kg	180.00	180.00
59	1	12 N15 ø10.0 c/9 C=188	kg	180.00	180.00
60	1	12 N14 ø10.0 c/9 C=188	kg	180.00	180.00
61	1	12 N13 ø10.0 c/9 C=188	kg	180.00	180.00
62	1	12 N12 ø10.0 c/9 C=188	kg	180.00	180.00
63	1	12 N11 ø10.0 c/9 C=188	kg	180.00	180.00
64	1	12 N10 ø10.0 c/9 C=188	kg	180.00	180.00
65	1	12 N9 ø10.0 c/9 C=188	kg	180.00	180.00
66	1	12 N8 ø10.0 c/9 C=188	kg	180.00	180.00
67	1	12 N7 ø10.0 c/9 C=188	kg	180.00	180.00
68	1	12 N6 ø10.0 c/9 C=188	kg	180.00	180.00
69	1	12 N5 ø10.0 c/9 C=188	kg	180.00	180.00
70	1	12 N4 ø10.0 c/9 C=188	kg	180.00	180.00
71	1	12 N3 ø10.0 c/9 C=188	kg	180.00	180.00
72	1	12 N2 ø10.0 c/9 C=188	kg	180.00	180.00
73	1	12 N1 ø10.0 c/9 C=188	kg	180.00	180.00
74	1	12 N0 ø10.0 c/9 C=188	kg	180.00	180.00
75	1	12 N18 ø10.0 c/9 C=188	kg	180.00	180.00
76	1	12 N17 ø10.0 c/9 C=188	kg	180.00	180.00
77	1	12 N16 ø10.0 c/9 C=188	kg	180.00	180.00
78	1	12 N15 ø10.0 c/9 C=188	kg	180.00	180.00
79	1	12 N14 ø10.0 c/9 C=188	kg	180.00	180.00
80	1	12 N13 ø10.0 c/9 C=188	kg	180.00	180.00
81	1	12 N12 ø10.0 c/9 C=188	kg	180.00	180.00
82	1	12 N11 ø10.0 c/9 C=188	kg	180.00	180.00
83	1	12 N10 ø10.0 c/9 C=188	kg	180.00	180.00
84	1	12 N9 ø10.0 c/9 C=188	kg	180.00	180.00
85	1	12 N8 ø10.0 c/9 C=188	kg	180.00	180.00
86	1	12 N7 ø10.0 c/9 C=188	kg	180.00	180.00
87	1	12 N6 ø10.0 c/9 C=188	kg	180.00	180.00
88	1	12 N5 ø10.0 c/9 C=188	kg	180.00	180.00
89	1	12 N4 ø10.0 c/9 C=188	kg	180.00	180.00
90	1	12 N3 ø10.0 c/9 C=188	kg	180.00	180.00
91	1	12 N2 ø10.0 c/9 C=188	kg	180.00	180.00
92	1	12 N1 ø10.0 c/9 C=188	kg	180.00	180.00
93	1	12 N0 ø10.0 c/9 C=188	kg	180.00	180.00
94	1	12 N18 ø10.0 c/9 C=188	kg	180.00	180.00
95	1	12 N17 ø10.0 c/9 C=188	kg	180.00	180.00
96	1	12 N16 ø10.0 c/9 C=188	kg	180.00	180.00
97	1	12 N15 ø10.0 c/9 C=188	kg	180.00	180.00
98	1	12 N14 ø10.0 c/9 C=188	kg	180.00	180.00
99	1	12 N13 ø10.0 c/9 C=188	kg	180.00	180.00
100	1	12 N12 ø10.0 c/9 C=188	kg	180.00	180.00
101	1	12 N11 ø10.0 c/9 C=188	kg	180.00	180.00
102	1	12 N10 ø10.0 c/9 C=188	kg	180.00	180.00
103	1	12 N9 ø10.0 c/9 C=188	kg	180.00	180.00
104	1	12 N8 ø10.0 c/9 C=188	kg	180.00	180.00
105	1	12 N7 ø10.0 c/9 C=188	kg	180.00	180.00
106	1	12 N6 ø10.0 c/9 C=188	kg	180.00	180.00
107	1	12 N5 ø10.0 c/9 C=188	kg	180.00	180.00
108	1	12 N4 ø10.0 c/9 C=188	kg	180.00	180.00
109	1	12 N3 ø10.0 c/9 C=188	kg	180.00	180.00
110	1	12 N2 ø10.0 c/9 C=188	kg	180.00	180.00
111	1	12 N1 ø10.0 c/9 C=188	kg	180.00	180.00
112	1	12 N0 ø10.0 c/9 C=188	kg	180.00	180.00
113	1	12 N18 ø10.0 c/9 C=188	kg	180.00	180.00
114	1	12 N17 ø10.0 c/9 C=188	kg	180.00	180.00
115	1	12 N16 ø10.0 c/9 C=188	kg	180.00	180.00
116	1	12 N15 ø10.0 c/9 C=188	kg	180.00	180.00
117	1	12 N14 ø10.0 c/9 C=188	kg	180.00	180.00
118	1	12 N13 ø10.0 c/9 C=188	kg	180.00	180.00
119	1	12 N12 ø10.0 c/9 C=188	kg	180.00	180.00
120	1	12 N11 ø10.0 c/9 C=188	kg	180.00	180.00
121	1	12 N10 ø10.0 c/9 C=188	kg	180.00	180.00
122	1	12 N9 ø10.0 c/9 C=188	kg	180.00	180.00
123	1	12 N8 ø10.0 c/9 C=188	kg	180.00	180.00
124	1	12 N7 ø10.0 c/9 C=188	kg	180.00	180.00
125	1	12 N6 ø10.0 c/9 C=188	kg	180.00	180.00
126	1	12 N5 ø10.0 c/9 C=188	kg	180.00	180.00
127	1	12 N4 ø10.0 c/9 C=188	kg	180.00	180.00
128	1	12 N3 ø10.0 c/9 C=188	kg	180.00	180.00
129	1	12 N2 ø10.0 c/9 C=188	kg	180.00	180.00
130	1	12 N1 ø10.0 c/9 C=188	kg	180.00	180.00
131	1	12 N0 ø10.0 c/9 C=188	kg	180.00	180.00
132	1	12 N18 ø10.0 c/9 C=188	kg	180.00	180.00
133	1	12 N17 ø10.0 c/9 C=188	kg	180.00	180.00
134	1	12 N16 ø10.0 c/9 C=188	kg	180.00	180.00
135	1	12 N15 ø10.0 c/9 C=188	kg	180.00	180.00
136	1	12 N14 ø10.0 c/9 C=188	kg	180.00	180.00
137	1	12 N13 ø10.0 c/9 C=188	kg	180.00	180.00
138	1	12 N12 ø10.0 c/9 C=188	kg	180.00	180.00
139	1	12 N11 ø10.0 c/9 C=188	kg	180.00	180.00
140	1	12 N10 ø10.0 c/9 C=188	kg	180.00	180.00
141	1	12 N9 ø10.0 c/9 C=188	kg	180.00	180.00
142	1	12 N8 ø10.0 c/9 C=188	kg	180.00	180.00
143	1	12 N7 ø10.0 c/9 C=188	kg	180.00	180.00
144	1	12 N6 ø10.0 c/9 C=188	kg	180.00	180.00
145	1	12 N5 ø10.0 c/9 C=188	kg	180.00	180.00
146	1	12 N4 ø10.0 c/9 C=188	kg	180.00	180.00
147	1	12 N3 ø10.0 c/9 C=188	kg	180.00	180.00
148	1	12 N2 ø10.0 c/9 C=188	kg	180.00	180.00
149	1	12 N1 ø10.0 c/9 C=188	kg	180.00	180.00
150	1	12 N0 ø10.0 c/9 C=188	kg	180.00	180.00

RESUMO DO AÇO

||
||
||